

cohesive

Tool Catalogue

Version 6 - 2024

The tools
you need to
succeed.





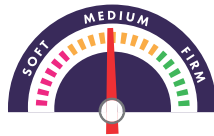
TOOL INDEX

Applicators	PAGE	1
Applicators - Specialised	PAGE	2 - 5
Knives & Blades	PAGE	5 - 8
Sign Mounts	PAGE	9
Accessories	PAGE	10 - 11
Cleaning	PAGE	12
Rulers - KEENCUT	PAGE	13
Rulers - WORLDWIDE	PAGE	14
Gloves	PAGE	15 - 16
Brushes	PAGE	17 - 19
Tape - General Purpose	PAGE	20 - 21
Tape - Reflective	PAGE	22
Tape - Double Sided	PAGE	23
Footpath Signs	PAGE	24 - 26
Pull Up Banners	PAGE	27
Cohesive Contact Details	PAGE	28

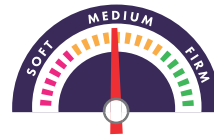
Applicators



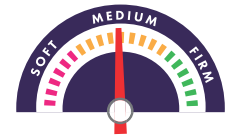
CODE: HVGSQPLAT
HVG PLATINUM SQUEEGEE
 Our most popular squeegee.



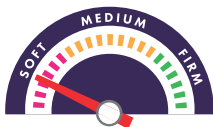
CODE: VXAOFE
ORACAL GREY VINYL APPLICATOR WITH A FELT EDGE
 Premium
 Plastic side to affixed Decals covered with application tape. Soft felt for application of larger areas.



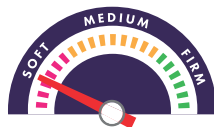
CODE: VXAO
ORACAL GREY VINYL APPLICATOR
 Premium
 For daily use, when decals or decorations with the appropriate application tape.



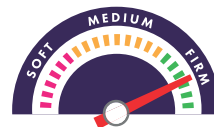
CODE: VXFA
ORAFOL FELT APPLICATOR
 Particularly suitable for the application of sensitive, very soft and high-gloss PVC films, which are applied in large formats to e.g. 3-dimensional surfaces.



CODE: VXAOGF
ORACAL GREY FELT APPLICATOR
 Compact Felt Particularly suitable for the application of sensitive, very soft and high-gloss PVC films, which are applied in large formats.



CODE: VXAWT
COHESIVE APPLICATOR - FELT EDGE
 FIRM - Plastic side used to affixed Decals covered with application tape. Soft felt side is used for application of large areas of self-adhesive film.



CODE: VXAWT4
COHESIVE APPLICATOR - WHITE TEFLON 4"
 FIRM - For daily use, when decals or decorations with the appropriate application tape.



Applicators - Specialised



CODE: SQUEEGEE

SISER SQUEEGEE (EASY SQUEEGEE)

Siser Application Squeegee can be used to affix application tape to graphics and for the application of graphics onto rigid substrates.



CODE: GDIGT083YL

GDI LIL' CHIZEL SOFT YELLOW

Lidco Soft Yellow Chisler. Ideal for removing decals, film or adhesive from sensitive surfaces. Use for pressing down small film creases or air bubbles.



CODE: GDIGT083P

GDI LIL' CHIZLER PINK

Ideal for removing decals, film or adhesive from sensitive surfaces. Use for pressing down small film creases or air bubbles.



CODE: GDISQSFT4

4" GREEN SOFT FLEX SQUEEGEE

The 4' Green Soft Flex Squeegee is the thinnest and the softest installation card that we offer. Made from a unique rubber and plastic blend, this squeegee has excellent bend and flex characteristics which make it perfect for applications on curved surfaces.



CODE: GDMT5M

GDI MONKEY TAILS

Monkey Tails are made out of the same thin, soft, durable felt as the Monkey Strips only they are not pre-cut. Monkey Tails are one long roll which allows installers to make a custom buffer for any sized squeegee.



CODE: GDIMS4

GDI MONKEY STRIPS

These pre-cut buffers fit any standard 4" squeegee. They are far superior to standard felt strips and will help prevent scratches to the wrap material during installation. Give your hard plastic squeegees a soft and smooth side with the Monkey Strip.



CODE: GDIGT062

6" PRO SQUEEGEE DELUXE

An installation squeegee as a ready-to-use assembly.

Used to remove application solution from beneath the film during the installation of all flat glass film types.



CODE: GDIGT204

SUP CLR POWER MAX/HANDLE

Ready-to-use installation squeegee uses angled Clear Max and specially modified and Unger Pro handle for GDI.



Applicators - Specialised



CODE: GDIGT1046

FUSION GRIP - 8 "

The 8" Fusion Big Mouth Handle features brass inlaid screw threads and stainless steel screws. This handle is designed to hold a 3/8" thick squeegee.

One of the biggest issues installers encounter when installing thick mil films is extended dry time. This is mainly due to not being able to extract a majority of the solution because their current tools flex too much or they don't have enough strength to push as hard as they need to. The Big Mouth handles and 3/8" Blades are the solution to that problem by taking more of the force required to adequately finish the job off of the installer.



CODE: GDIGT1046 & GDIGT117-8

FUSION GRIP - 8" & 8" BLUE MAX SQUEEGEE

Interchange the Fusion Grip 8" handle with our two Blue Max Squeegees.



CODE: GDIGT122

BLUE POWER MAX W/ HANDLE

Ready-to-use installation squeegee uses angled Blue Max and specially modified Unger Pro handle for GDI.



CODE: GDIGT107A

6" TR. SCRAP W/ANGLED HEAD

Improved version of the original 6" scraper. Lightweight and maneuverable. Handle is tilted at a 30 degree angle. Includes cover and one double-edged blade.



CODE: GDIGT117-8

8" BLUE MAX SQUEEGEE

Installation squeegee for flat glass applications. Use this blade in the 8" Fusion Handle.



CODE: GDIGT117

5" BLUE MAX SQUEEGEE

Installation squeegee for automotive and flat glass applications. Harder than GT203, these tools are excellent for water evacuation.



CODE: GDIGT205

AUTO TINT TOOL

The Bulldozer I is used in automotive applications. It allows you to get to those hard to reach areas, such as behind speakers, brake lights, low angles and rear windows. Features a 6" squeegee blade and is 15" in overall length.

Applicators - Specialised



CODE: GDIGT044BLU

BLUE LITTLE FOOT SQUEEGEE

This squeegee measures about 6" (15 cm) along the usable edge. The pointed edge of this tool allows the installer to squeegee in very tight areas. The Little Foot has plenty of room to keep a good grip on the squeegee.



CODE: GDIGT202B

THE CONQUERER-BLUE

Same as the original Conquerer with a slightly harder durometer for more squeegeeing power.



CODE: GDIGT202

THE CONQUERER

The Conquerer is the original corner reach tool. Features a soft squeegee blade along one edge and point hard card tips on the ends making it a versatile staple to any tool kit.



CODE: GT1010

PAINT PROTECTION SQUEEGEE

Soft rubber card style squeegee. Recommended for paint protection installations.



CODE: GDIGT044BLK

BLACK LITTLE FOOT SQUEEGEE

This squeegee measures about 6" (15 cm) along the usable edge. The pointed edge of this tool allows the installer to squeegee in very tight areas. The Little Foot has plenty of room to keep a good grip on the squeegee.



CODE: GDIGT044

RED LITTLE FOOT SQUEEGEE

This squeegee measures about 6" (15 cm) along the usable edge. The pointed edge of this tool allows the installer to squeegee in very tight areas. The Little Foot has plenty of room to keep a good grip on the squeegee.



CODE: GDIGT2003-PLT

ORIGINAL EZ REACH PLATINUM

The durometer (hardness) is more than the gold and is just as popular!



CODE: GDIGT2003

ORIGINAL EZ REACH GOLD

The durometer (hardness) is less than the platinum and is just as popular!



Applicators - Specialised / Knives & Blades



CODE: GDIGT151

QUICK FOOT - YELLOW

A stiff squeegee with a handle for jobs that require medium reach. Slim and trim with an unwrapped handle.



CODE: GDIGT151B

QUICK FOOT - BLUE

A stiff squeegee with a handle for jobs that require medium reach. Slim and trim with an unwrapped handle.



CODE: GDIGT151W

QUICK FOOT - WHITE

A stiff squeegee with a handle for jobs that require medium reach. Slim and trim with an unwrapped handle.



CODE: GDIGT206

WHALE TAIL SQUEEGEE

Great for getting behind brake lights and back window applications.



CODE: GDIGT226

OLFA"SLV.2" AUTOLOCK KNIFE

An improved and versatile knife that features right or left-handed use, blade position auto-lock, and one-segment click action.



CODE: GDIGT026N

A-553P INJECTOR CART. KNIFE (W/30 DEGREE BLADE)

Used for film pattern cutting and trimming. Comes with 30 degree blades installed but will accommodate regular 9 mm blades. Holds five blades for automatic blade replacement capabilities.



CODE: BFPLHC

BUBBLE-FREE PRO LONG HANDLED CUTTER 60CM

Bubble-Free Pro long handled cutters make trimming wide graphics easy. The long handle allows you to reach right across your table with one stroke, reducing time when trimming.

Knives & Blades



CODE: KSOS
ORANGE SNAP-OFF KNIFE
 Small - 9mm



CODE: KSOL
ORANGE SNAP-OFF KNIFE
 Large - 18mm



CODE: KNA300METAL
NT CUTTER A-300GRP
 9mm Snapoff Knife
 - Grey Metal



CODE: KNA300P
NT CUTTER A-300P
 9mm Snapoff knife
 - Cream
 Includes 3 blades



CODE: KNL500G
NT CUTTER L-500G SCREWSTOPPER
 18mm knife



CODE: KNL500GR
NT CUTTER L-500GRP AUTOLOCK
 18mm knife



CODE: KNSZAL
STERLING ZEBRA AUTOLOCK METAL KNIFE
 18mm knife



CODE: KOSS
ORAFOL SMALL SNAP-OFF KNIFE - BLK



CODE: KDH601CS
DAFA 601CS - HOBBY KNIFE - SILVER (INC. 5x BLADES + CAP)



CODE: KDH600S
DAFA 600S - HOBBY KNIFE - BLACK (INCL. 5x BLADES + CAP)



CODE: KSHPH
HAYDN SCRAPER HANDLE GREEN/RED PLASTIC



Knives & Blades



CODE: KND50
NT CUTTER BD-50 PACK
 9mm 30deg Snapoff
 Blades



CODE: KNA50
NT CUTTER BA-50 PACK
 9mm, 58 degree Snapoff
 Blade - use with small
 orange knife



CODE: KNA10P
NT CUTTER BA-10 PACK
 9mm, 58 degree Snapoff
 Blade



CODE: KNL50
NT CUTTER BL-50 PACK
 18mm Snapoff Blades -
 use with Large orange
 knife



CODE: KNL10P
**NT CUTTER BL-10P 18MM
 SNAPOFF BLADES**
 10 pack



CODE: KNBSNITTY
**SNITTY CUTTER KNIFE
 BLADES**
 10 pack



CODE: KDB1150
**DIPLOMAT HOBBY
 BLADES #11**
 50 pack



CODE: KUTBL
AMPRO UTILITY BLADES
 5 pack



CODE: KSWC
**AMPRO RETRACTABLE
 SAFETY SCRAPER**
 Includes 5 blades



CODE: KRB10
**AMPRO RAZOR BLADES
 SINGLE EDGE**
 10 pack



CODE: APBVCRB
**SOTT BACKING PAPER
 CUTTER REPLACEMENT
 BLADE**
 10 Pack



CODE: SNITTYCO
COHESIVE SNITTY CUTTER
 With finger grip and
 enclosed blade it is perfect
 for cutting vinyls.



Knives & Blades



CODE: KSSR5
**SCRAPERITE PLASTIC
 SCRAPER**
 Li'l Gripper Holder & 5
 blades



CODE: KSSRB100
**SCRAPERITE PLASTIC
 SCRAPER BLADES
 ORANGE - Flexible**
 100 pack



CODE: KSSRB100B
**SCRAPERITE PLASTIC
 SCRAPER BLADES
 BLACK - Firm**
 100 pack



CODE: KBR1/12
RAZOR BLADES
 No.12 Single Edge
 100 pack



CODE: KUTBL
**WORLDWIDE HEAVY
 DUTY SCRAPER BLADES
 4"**
 5pk - Fits Worldwide 902
 Scraper Handle



CODE: KSB250
**WORLDWIDE 902 SCRAPER
 HANDLE 100MM**



CODE: OSBDC2
**STERLING BLADEMATE -
 SAFETY BLADE DISPOSAL
 CASE - BLACK**



CODE: KSMH
**SWAN MORTON
 SCALPEL HANDLE**
 Swan Morton Nickel
 Steel Alloy Handle #3



CODE: KSMBL
**SWAN MORTON
 BLADES #10**
 #10 Swan Morton
 blades for the Swan
 Morton handle. 5 pack.



CODE: KSMBL10A
**SWAN MORTON
 BLADES #10A**
 #10A Swan Morton
 blades for the Swan
 Morton handle. 5 pack.



CODE: KSMBL11
**SWAN MORTON
 BLADES #11**
 #11 Swan Morton
 blades for the Swan
 Morton handle. 5 pack.



Sign Mounts



CODE: DTMLS15610

**FUSION MOUNT LIGHT
SILVER 15 X 7 X 10**

Supplied in a 4 Pack.
Interior use. Post 7mm \varnothing



CODE: DTMLS15618

**FUSION MOUNT LIGHT
SILVER 15 X 7 X 18**

Supplied in a 4 Pack.
Interior use.



CODE: DTMLS15640

**FUSION MOUNT LIGHT
SILVER 15 X 6 X 40**

Supplied in a 4 Pack.
Interior use.



CODE: DTMLS15910TT

**FUSION MOUNT LIGHT
SILVER 15 X 10 X 10
TURRET TOP**

Supplied in a 4 Pack.
Interior use.



CODE: DTMLS251025

**FUSION MOUNT LIGHT
SILVER 25 X 10 X 25**

Supplied in a 4 Pack.
Interior use.



CODE: DTMLS301010

**FUSION MOUNT LIGHT
SILVER 30 X 10 X 10**

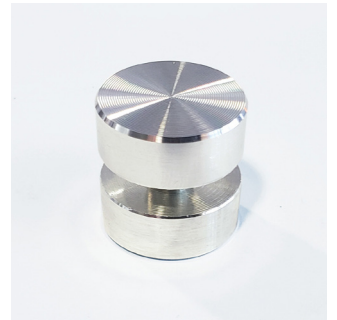
Supplied in a 4 Pack.
Interior use.



CODE: DTMLS20910

**FUSION MOUNT LIGHT
SILVER 19 X 7 X 10**

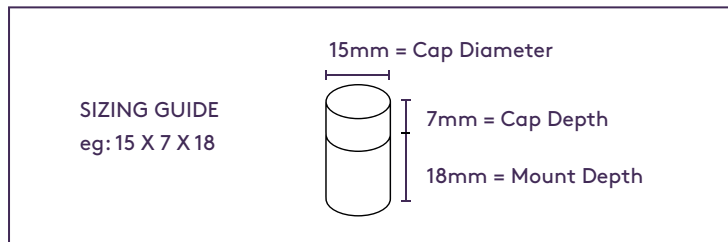
Supplied in a 4 Pack.
Interior use.



CODE: DTMLS251010

**FUSION MOUNT LIGHT
SILVER 25 X 8 X 10**

Supplied in a 4 Pack.
Interior use.



Accessories



CODE: VXTENG
TWEezer ENGINEER
125MM STRAIGHT PT-01



CODE: VXTECO
TWEezer ECONOMY
POINTED PTS-01



CODE: STOOLSET
SISER ACC - TOOL SET - WEEDER AND TWEezer SET
The sharp tips allow you to pierce the vinyl for easy removal. Made from surgical steel with a anti-static rubber coated grip. (Includes 1 x Weeder, 1 x Tweezer)



CODE: POMWH
PENCIL - STAEDTLER
OMNICHROME - WHITE
108-0. NON-PERMANENT
Cleans off with water.



CODE: POMBK
PENCIL - STAEDTLER
OMNICHROME - BLACK
108-9. NON-PERMANENT
Cleans off with water.



CODE: POMBL
PENCIL - STAEDTLER
OMNICHROME - BLUE
108-3. NON-PERMANENT
Cleans off with water.



CODE: PCGBK/PCGWH
PENCIL - STAEDTLER
CHINOGRAPH - BLACK
& WHITE.
Permanent.



CODE: VXR2
RUBBER ROLLER - 2"



CODE: VXR3
RUBBER ROLLER - 3"



CODE: VXR4
RUBBER ROLLER - 4"



CODE: VXR6
RUBBER ROLLER - 6"



Accessories / Cleaning



CODE: MEMOMAG12
PAWN MAGNETS 12 PACK



CODE: ASPOU21
AS HANDOVER POUNCE
WHEEL 2.1 DIAMETER



CODE: ASPOUSET
GRIFFOLD POUNCE
WHEEL SET (9,10,12)



CODE: BTW
BLASTER TRACTOR
WHEEL VINYL REMOVER



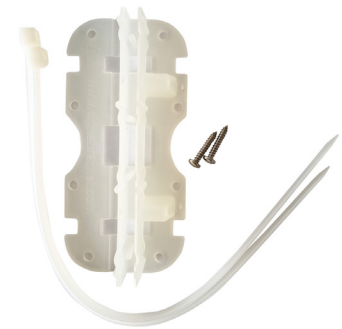
CODE: FS180S
FOAM SLEEVE SPECIAL
(HAYDN) 5MM - 180MM
Fits standard roller handle.



CODE: ORAPPGEL1L
ORACAL APPLICATION
GEL 1000ML



CODE: SASSAB
FUSION SECURE-A-SIGN BRACKET FOR
COREFLUTE
Secure flute board signs to any surface.



CODE: BFPLR
BUBBLE-FREE PRO
LINT ROLLER
Bubble-Free Pro Lint Roller keeps
your digital prints free from dust
to ensure dust free lamination.
Easy clean.

Cleaning



CODE: PTIPA4
ISO PROPYL ALCOHOL
(IPA) 4L



CODE: PTIPA1
ISO PROPYL ALCOHOL
(IPA) 1L



CODE: PTDG4
WAX AND GREASE
DEGREASER 4L



CODE: PTDG1
WAX AND GREASE
DEGREASER 1L



CODE: ROST-037A
ROLAND PARTS -
CLEANING STICKS FOR ALL INKJETS
Available in a 10 pack or 100 pack



CODE: VXSRT5
SPRAY BOTTLE
500ML SOLVENT
RESISTANT TRIGGER



CODE: VXSRT1
SPRAY BOTTLE
1L SOLVENT RESISTANT
TRIGGER

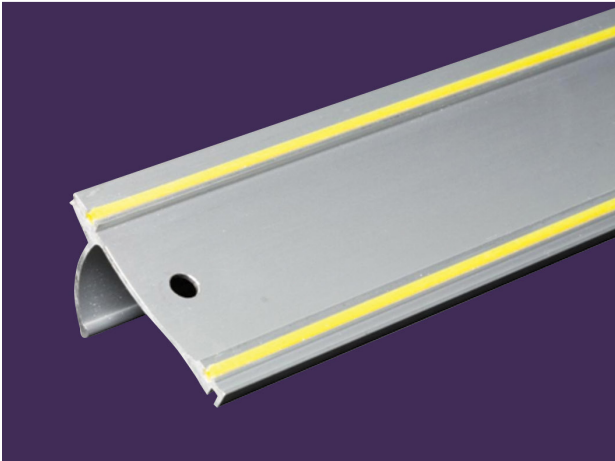


CODE: DIGIWPE
DIGITAL CLEANING
WIPES
200 PACK
36CM X 45CM



CODE: CLEANKITG
CLEANING AND CARE
KIT FOR GLOSSY CAR
WRAPPING FILMS





KEENCUT SAFETY STRAIGHT EDGE RULER

Designed for your safety - You can rely on Keencut's industry-leading reputation for safety and quality, even when buying the simplest tool.

Our lightweight Safety Straight Edge is precision engineered for use in marking, drawing, pen-lining, scoring or cutting. Available in a range of sizes.



**Protecting you
Protecting your work**



Designed for your safety



5 Year Guarantee

CODE: KCSSE45

KEENCUT SAFETY STRAIGHT EDGE 45CM RULER

CODE: KCSSE60

KEENCUT SAFETY STRAIGHT EDGE 60CM RULER

CODE: KCSSE75

KEENCUT SAFETY STRAIGHT EDGE 75CM RULER

CODE: KCSSE105

KEENCUT SAFETY STRAIGHT EDGE 105CM RULER

CODE: KCSSE120

KEENCUT SAFETY STRAIGHT EDGE 120CM RULER

CODE: KCSSE135

KEENCUT SAFETY STRAIGHT EDGE 135CM RULER

CODE: KCSSE150

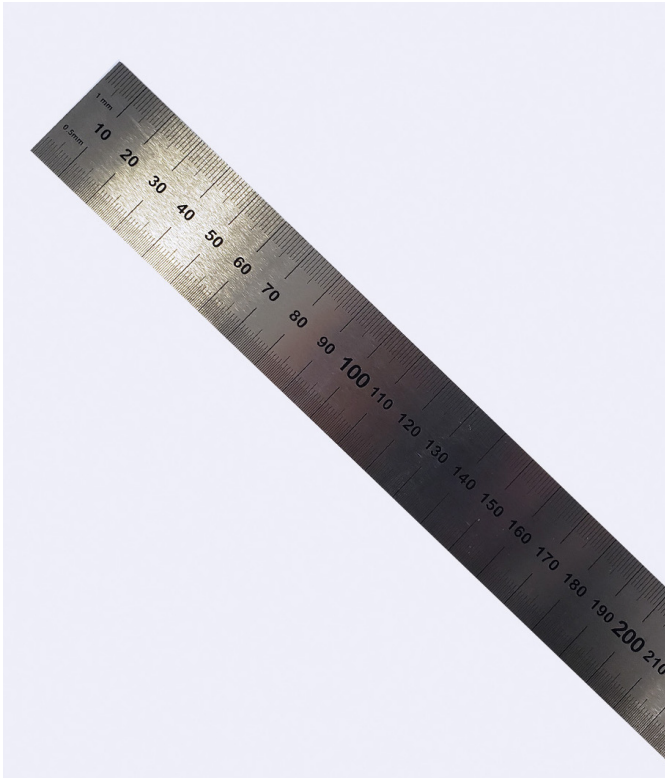
KEENCUT SAFETY STRAIGHT EDGE 150CM RULER

CODE: KCSSE180

KEENCUT SAFETY STRAIGHT EDGE 180CM RULER



Rulers



WORLDWIDE STAINLESS STEEL RULER

CODE: RS150

WORLDWIDE STAINLESS STEEL RULER - 150MM

CODE: RS300

WORLDWIDE STAINLESS STEEL RULER - 300MM

CODE: RS450

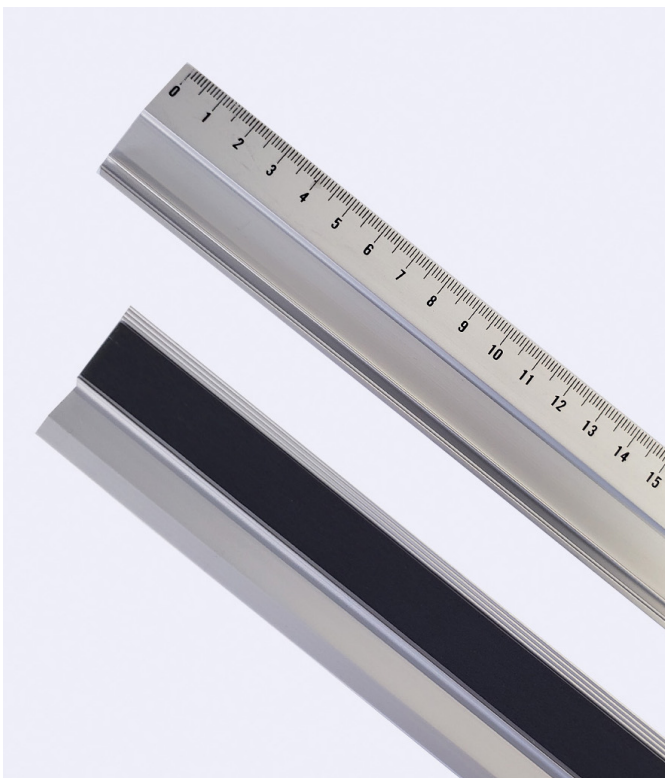
WORLDWIDE STAINLESS STEEL RULER - 450MM

CODE: RS600

WORLDWIDE STAINLESS STEEL RULER - 600MM

CODE: RS1000

WORLDWIDE STAINLESS STEEL RULER - 1000M



WORLDWIDE ALUMINIUM NON-SLIP RULER

CODE: RA600

WORLDWIDE ALUMINIUM NON-SLIP RULER - 600MM

CODE: RS100

WORLDWIDE ALUMINIUM NON-SLIP RULER - 1000MM



Gloves



CODE: WGWGGOHST

WASTEGATE GHOST WRAPGLOVE

- Lint Free / Static Resistant
- Prevents oil transfer from hands to adhesive side of film
- No fingerprint transfer to adhesive, inherent to bare hand application of PPF
- No hot spots from hand when working kits or large panels
- Quicker movement of fluid using the gloved hand upon setting panel just before squeegee use = Less squeegee time = Higher production
- Decreased fluid puddling using the gloved hand
- The GHOST™ feature is extremely slick so defining edges with hand is immediate, with NO drag
- Cut Resistance is A2 - extremely cut resistant



CODE: WGSGGOHST2P

WASTEGATE GHOST SQUEEGEEGLOVE 2 PACK ONE SIZE

- A High performance tool for your squeegee
- The GHOST shines when applying films in high temp conditions and direct sunlight
- Effortlessly glides over rivete pre-mask/ transfer paper applied graphics
- Less effort on commercial applications = less energy to expend during application
- The GHOST feature offer is extremely slick, so defining edges is immediate with NO Drag

Gloves



CODE: WGWGV3

WASTEGATE WRAPGLOVE V3

WrapGlove® by Wastegate is specifically constructed to optimize any applicators efforts. Prevents oil transfer to surfaces, Reduced scratches, Anti static properties that reduce the attraction of airborne dust, Machine washable.

Built durable to be used over and over again

CODE: WGWGV32PS

WASTEGATE WRAPGLOVE V3 2 PACK SMALL

CODE: WGWGV32PM

WASTEGATE WRAPGLOVE V3 2 PACK MEDIUM

CODE: WGWGV32PL

WASTEGATE WRAPGLOVE V3 2 PACK LARGE

CODE: WGWGV32PXL

WASTEGATE WRAPGLOVE V3 2 PACK X-LARGE



CODE: APGLOVESM

APPLICATION GLOVES 2-PIECES - MEDIUM SIZE

CODE: APGLOVESXL

APPLICATION GLOVES 2-PIECES - X LARGE SIZE

CODE: APGLOVESL

APPLICATION GLOVES 2-PIECES - LARGE SIZE



CODE: DIGCOTGL

DIGITAL COTTON GLOVE UNISIZE PAIR

Digital cotton and application gloves.



Brushes - 2101 Sable Mix Chisel Writer



CODE: B2101/1

SERIES 2101 SABLE MIX
CHISEL WRITER

1

Acrylic Paint



CODE: B2101/2

SERIES 2101 SABLE MIX
CHISEL WRITER

2

Acrylic Paint



CODE: B2101/3

SERIES 2101 SABLE MIX
CHISEL WRITER

3

Acrylic Paint



CODE: B2101/4

SERIES 2101 SABLE MIX
CHISEL WRITER

4

Acrylic Paint



CODE: B2101/5

SERIES 2101 SABLE MIX
CHISEL WRITER

5

Acrylic Paint



CODE: B2101/6

SERIES 2101 SABLE MIX
CHISEL WRITER

6

Acrylic Paint



CODE: B2101/7

SERIES 2101 SABLE MIX
CHISEL WRITER

7

Acrylic Paint



CODE: B2101/8

SERIES 2101 SABLE MIX
CHISEL WRITER

8

Acrylic Paint

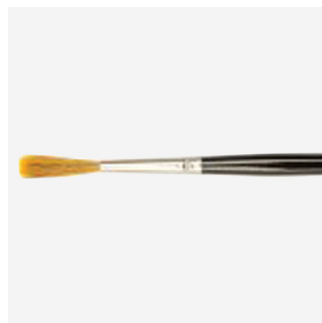


CODE: B2101/9

SERIES 2101 SABLE MIX
CHISEL WRITER

9

Acrylic Paint

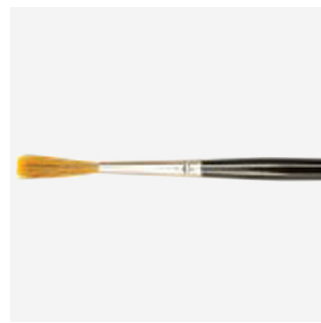


CODE: B2101/10

SERIES 2101 SABLE MIX
CHISEL WRITER

10

Acrylic Paint



CODE: B2101/12

SERIES 2101 SABLE MIX
CHISEL WRITER

12

Acrylic Paint



Brushes - 2112 Pure Sable Chisel Writer



CODE: B2112/00

SERIES 2112 PURE SABLE
CHISEL WRITER

00

Enamel Paint



CODE: B2112/0

SERIES 2112 PURE SABLE
CHISEL WRITER

0

Enamel Paint



CODE: B2112/1

SERIES 2112 PURE SABLE
CHISEL WRITER

1

Enamel Paint



CODE: B2112/2

SERIES 2112 PURE SABLE
CHISEL WRITER

2

Enamel Paint



CODE: B2112/3

SERIES 2112 PURE SABLE
CHISEL WRITER

3

Enamel Paint



CODE: B2112/4

SERIES 2112 PURE SABLE
CHISEL WRITER

4

Enamel Paint



CODE: B2112/5

SERIES 2112 PURE SABLE
CHISEL WRITER

5

Enamel Paint



CODE: B2112/6

SERIES 2112 PURE SABLE
CHISEL WRITER

6

Enamel Paint



CODE: B2112/7

SERIES 2112 PURE SABLE
CHISEL WRITER

7

Enamel Paint



CODE: B2112/8

SERIES 2112 PURE SABLE
CHISEL WRITER

8

Enamel Paint



CODE: B2112/9

SERIES 2112 PURE SABLE
CHISEL WRITER

9

Enamel Paint



CODE: B2112/10

SERIES 2112 PURE SABLE
CHISEL WRITER

10

Enamel Paint



Brushes - 2112 Pure Sable Chisel Writer



CODE: B2112/12
 SERIES 2112 PURE SABLE
 CHISEL WRITER
 # 12
 Enamel Paint



CODE: B2112/14
 SERIES 2101 SABLE MIX
 CHISEL WRITER
 # 14
 Enamel Paint

Brushes - 2106 Brown Ox Truck Lettering



CODE: B2106/1"
 SERIES 2106 BROWN OX
 TRUCK LETTERING
 # 1"



CODE: B2106/1/2"
 SERIES 2106 BROWN OX
 TRUCK LETTERING
 # 1/2"



CODE: B2106/3/4"
 SERIES 2106 BROWN OX
 TRUCK LETTERING
 # 3/4"



CODE: B21063/8"
 SERIES 2106 BROWN OX
 TRUCK LETTERING
 # 3/8"



CODE: B21065/8"
 SERIES 2106 BROWN OX
 TRUCK LETTERING
 # 5/8"



CODE: MAHLW2
 MAHL STICK
 A.S. HANDOVER WOODEN MAHL STICK 2PC
 As per picture.

Tape - General Purpose



CODE: TM8B24
 NO.8 GENERAL PURPOSE
 MASKING TAPE
 12MM X 50 MTRS

CODE: TM8B24
 NO.8 GENERAL PURPOSE
 MASKING TAPE
 24MM X 50 MTRS

CODE: TM8B18
 NO.8 GENERAL PURPOSE
 MASKING TAPE
 18MM X 50 MTRS



CODE: TMSP12
 NO.7 GENERAL PURPOSE
 ONE-DAY MASKING TAPE
 12MM X 50M

CODE: TMSP24
 NO.7 GENERAL PURPOSE
 ONE-DAY MASKING TAPE
 24MM X 50M

CODE: TMSP18
 NO.7 GENERAL PURPOSE
 ONE-DAY MASKING TAPE
 18MM X 50M

CODE: TMSPZB48
 NO. 7B GENERAL PURPOSE
 ONE-DAY MASKING (SPECIAL)
 48MM X 50M



CODE: TM11B004/TM11B096
 NO.11 SOFT PVC MASKING TAPE
 48MM X 55M
 96MM X 55M



CODE: TMSPZB48
 NO. 7B MASKING SPECIAL
 48MM X 50M



CODE: TMPHT24
 NO. 12 MASKING PREMIUM
 HI TACK
 24MM X 50M



Tape - General Purpose



CODE: TLPVC12

TAPE - LINING PVC
12MM X 66M

CODE: TLPVC6

TAPE - LINING PVC
6MM X 66M

*Colours may vary



CODE: TSUO3

TAPE - UNIVERSAL
STRIPING 3MM/90M

CODE: TSUO3

TAPE - UNIVERSAL
STRIPING 6MM/45M

CODE: TSUO12

TAPE - UNIVERSAL
STRIPING 12MM/45M

CODE: TSUO25

TAPE - UNIVERSAL
STRIPING 25MM/45M

*Colours available upon
request



CODE: HPHRT5MM

HEAT PRESS - HEAT
RESISTANT TAPE -5MM

Used to hold transfers
in place whilst heat
pressing.



CODE: GDIGT2021-4

TEFLON TAPE 3/4" X 4 YD

Slip Tape is the ultimate
product for making your
application squeegees
smoothly and safely
glide across window film,
paint protection, and car
wrap and vinyl graphic
applications. No more
tearing or scratching the
material you are working
with.



CODE: TSWC360

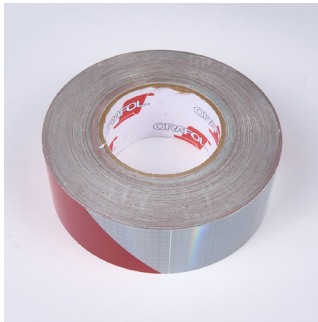
WRAPCUT FINE FILAMENT EDGE CUTTING TAPE
3MM X 60.9M

WrapCut Fine Filament Edge Cutting Tape can
be used to make precise trim lines through many
printed vinyl and protective film products as well
as paint and epoxy coatings.

With the fine cutting filament always at the very
edge of the tape, WrapCut prevents errors in
cutting location, producing a perfect cut every time.

Tape - Reflective

ORALITE®

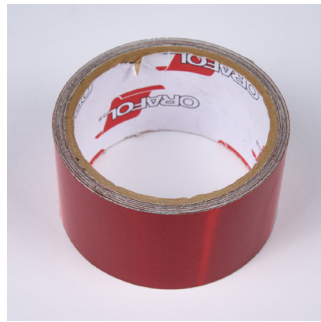


CODE: MRV82RW45LH

**ORALITE V82
CONSPICUITY TAPE
LH & RH - RED/WHITE**

50mm (sold per metre)

Other widths available on special order.



CODE: RVC104R50

**ORALITE VC104+
CONSPICUITY TAPE
- RED**

50mm (sold per metre)



CODE: RVC104Y50

**ORALITE VC104+
CONSPICUITY TAPE
- YELLOW**

50mm (sold per metre)

Reflective Conspicuity Tape is designed to assist motorists to detect the whereabouts of large vehicles on our roads.

The product also assists in distinguishing the size and dimensions of HGV vehicles and trailers at night or poor weather conditions.

Tape - Transfer Tape

ORABOND®



CODE: OT1375...

**ORABOND 1375 ACRYLIC
TRANSFER TAPE 60MIC**

**SIZES: 25MM, 50MM X 305MM,
610MM X 50M**

ORABOND 1375 Acrylic Transfer Tape, ideally suited for metal and plastic name plates and fascia panels. It is suitable for adhesion to smooth or lightly porous surfaces. Excellent peel and shear strength, extreme resistance to UV light, solvents and plasticiser and 160 degree long term temperature resistance.

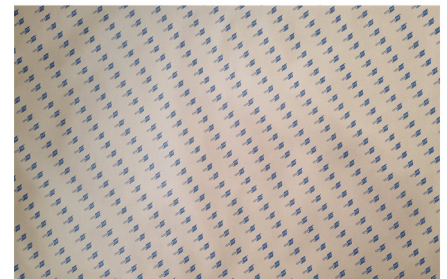


CODE: OT1377..

**ORABOND 1377 ACRYLIC
TRANSFER TAPE 125MIC**

**SIZES: 25MM, 50MM X 305MM,
610MM X 50M**

ORABOND 1377 Acrylic Transfer Tape, ideally suited for metal and plastic name plates and fascia panels as well as adhesion to rough, structured or stamped surfaces. It is recommended to apply this tape at the smallest angle possible. Excellent peel and shear strength, extreme resistance to UV light, solvents and plasticiser and 160 degree long term temperature resistance.



CODE: OT1375S

**ORABOND 1375S ACRYLIC
TRANSFER TAPE 100 SHEETS
60MIC 610MM X 914MM**

This tape is ideal for use in industrial and commercial applications, for signs, decorations, front plates and displays that require an extremely high shear strength, adhesion strength and temperature resistance. It is suitable for adhesion to smooth or lightly porous surfaces.



cohesive



ORABOND®

UHB® Tape

Product	UHB03100T	UHB03110W	UHB03110G
Colour	Transparent	White	Grey
Thickness	1.0mm	1.1mm	1.1mm
Widths	12mm/19mm/25mm	12mm/19mm/25mm	12mm/19mm/25mm
Key Properties	High-strength bonding of transparent material needing an "invisible" joint	High performance bonding and mounting of light coloured surfaces	High performance bonding and mounting of dark coloured surfaces
Roll length	33mtrs	33mtrs	33mtrs
Shear strength	0,50 N/mm ² , (50 N/cm ²) <small>After 24 hrs (based on ASTM D1002, stainless steel)</small>	0,62 N/mm ² , (62 N/cm ²) <small>After 24 hrs (based on ASTM D1002, stainless steel)</small>	0,62 N/mm ² , (62 N/cm ²)



CODE: OT1395PP...

ORABOND 1395PP - 130MIC DOUBLESIDED CLEAR TAPE

SIZES: 19MM, 25MM, 50MM X 50M

Consists of polyester film carrier, layered on both sides with a modified acrylate adhesive. It has a very good resistance against UV radiation, extreme temperatures, chemicals, solvents and humidity.



CODE: OT1397PP...

ORABOND 1397PP 210MIC DOUBLESIDED CLEAR TAPE

SIZES: 12MM, 19MM, 25MM, 50MM, 500MM X 50M

High Performance Double Coated Tape with red polypropylene liner - Ideal for use with POP displays, outdoor signage, banners, fluted PP board etc. Very good resistance against UV light, solvent and plasticisers and has a 160 degree long term temperature.



CODE: OT1811...

ORAMOUNT 1811 - 1140MIC DOUBLESIDED FOAM TAPE

SIZES: 19MM, 25MM X 25M

For the installation of spray-cast and extruded plastic parts with smooth surfaces such as panels, bars and signs, as well as plexiglass mirrors for interior fit-outs and displays. Due to its good UV, water and ageing resistance, this product is also suitable for external applications. Modified solvent acrylate adhesive.



Footpath Signs



CODE: CSRBPB

COMBO FOOTPATH SIGN

- RUBBER BASE + ALUMINIUM COMPOSITE PANEL
- PANEL 800MM X 600MM WHITE (WITH HANDLE)



CODE: SB2BBLK & SB2PWH

FUSION B2 FOOTPATH SIGN

- 600MM BASE ONLY - BLACK & FUSION B2 ALUMINIUM COMPOSITE PANEL
- PANEL 800MM X 600MM WHITE (NO HANDLE)



CODE: SRUBBER

FUSION FOOTPATH SIGN

RUBBER BASE ONLY

Heavy rubber base for high wind areas.



CODE: SB2BBLK

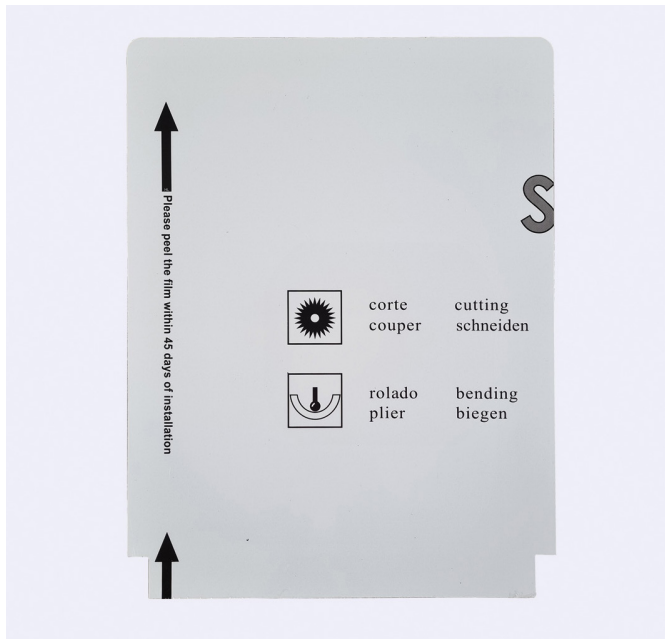
FUSION B2 FOOTPATH SIGN - 600MM

PLASTIC BASE ONLY - BLACK

Plastic water fillable.



Footpath Signs



CODE: SB2PWH

FUSION B2 ALUMINIUM COMPOSITE PANEL
800MM X 600MM

WHITE (NO HANDLE)



CODE: SB2PWH

FUSION B2 ALUMINIUM COMPOSITE PANEL
800MM X 600MM

WHITE (WITH HANDLE)



CODE: SB2PBLKNH

FUSION B2 ALUMINIUM COMPOSITE PANEL
800MM X 600MM

BLACK (NO HANDLE)



CODE: SB2PBLK

FUSION B2 ALUMINIUM COMPOSITE PANEL
800MM X 600MM

BLACK (WITH HANDLE)

Footpath Signs/Promotional



CODE: SACS9

FUSION A-FRAME WITH COLOURSTEEL PANEL
900MM X 600MM

Steel panels attached.



CODE: SACF9

FUSION A-FRAME (TO SUIT COREFLUTE INSERT)
900MM X 600MM

5mm Coreflute to be inserted in both sides.
Coreflute not included.



CODE: SGS4CF

FUSION SIGN METAL GRASS SPIKE FOR COREFLUTE



CODE: SSMFR

FUSION PLASTIC COLOURED COREFLUTE SIGN
HOLDER (SELMAX)



Pull Up Banners



CODE: SSSRU850P

FUSION ECONOMY SINGLE SIDED ROLLUP BANNER
STAND 850MM X 2000MM

Comes in a black carry case.



CODE: DTROLL85

FUSION PREMIUM SINGLE SIDED ROLLUP BANNER
STAND 850MM X 2000MM

Comes in a black carry case.



The tools you need to succeed.

AUCKLAND

Unit 2, 99 Carbine Road,
Mt Wellington,
Auckland 1060

cohesivenz.co.nz

p. 09 525 6370 / 0800 113 631
auckland@cohesivenz.co.nz

CHRISTCHURCH

10b Moncur Pl,
Addington,
Christchurch 8024

cohesivenz.co.nz

p. 03 379 3795 / 0800 113 631
christchurch@cohesivenz.co.nz



cohesive

cohesive