


cohesive

Tool Catalogue

Version 8- 2025



The tools
you need to
succeed.





TOOL INDEX

Applicators	PAGE	1
Applicators - Specialised	PAGE	2 - 5
Knives & Blades	PAGE	5 - 8
Sign Mounts	PAGE	9
Accessories	PAGE	10 - 11
Cleaning	PAGE	12
Rulers - KEENCUT	PAGE	13
Rulers - WORLDWIDE	PAGE	14
Gloves	PAGE	15 - 16
Brushes	PAGE	17 - 19
Tape - General Purpose	PAGE	20 - 21
Tape - Reflective	PAGE	22
Tape - Double Sided	PAGE	23
Footpath Signs	PAGE	24 - 27
Pull Up Banners	PAGE	28
Cohesive Contact Details	PAGE	28

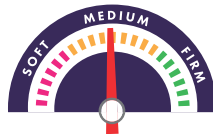
Applicators



CODE: HVGSQPLAT

HVG PLATINUM SQUEEGEE

Our most popular squeegee.

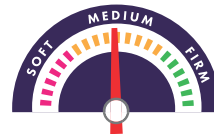


CODE: VXAOFE

ORACAL GREY VINYL APPLICATOR WITH A FELT EDGE

Premium

Plastic side to affixed Decals covered with application tape. Soft felt for application of larger areas.

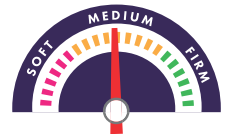


CODE: VXAO

ORACAL GREY VINYL APPLICATOR

Premium

For daily use, when decals or decorations with the appropriate application tape.



CODE: VXFA

ORAFOL FELT APPLICATOR

Particularly suitable for the application of sensitive, very soft and high-gloss PVC films, which are applied in large formats to e.g. 3-dimensional surfaces.



CODE: VXAOGF

ORACAL GREY FELT APPLICATOR

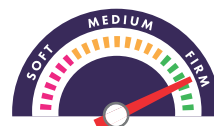
Compact Felt Particularly suitable for the application of sensitive, very soft and high-gloss PVC films, which are applied in large formats.



CODE: VXAWT

COHESIVE APPLICATOR - FELT EDGE

FIRM - Plastic side used to affixed Decals covered with application tape. Soft felt side is used for application of large areas of self-adhesive film.



CODE: VXAWT4

COHESIVE APPLICATOR - WHITE TEFLON 4"

FIRM - For daily use, when decals or decorations with the appropriate application tape.



Applicators - Specialised



CODE: SQUEEGEE

SISER SQUEEGEE (EASY SQUEEGEE)

Siser Application Squeegee can be used to affix application tape to graphics and for the application of graphics onto rigid substrates.



CODE: GDIGT083YL

GDI LIL' CHIZEL SOFT YELLOW

Lidco Soft Yellow Chisler. Ideal for removing decals, film or adhesive from sensitive surfaces. Use for pressing down small film creases or air bubbles.



CODE: GDIGT083P

GDI LIL' CHIZLER PINK

Ideal for removing decals, film or adhesive from sensitive surfaces. Use for pressing down small film creases or air bubbles.



CODE: GDISQSOFT4

4" GREEN SOFT FLEX SQUEEGEE

The 4" Green Soft Flex Squeegee is the thinnest and the softest installation card that we offer. Made from a unique rubber and plastic blend, this squeegee has excellent bend and flex characteristics which make it perfect for applications on curved surfaces.



CODE: GDMT5M

GDI MONKEY TAILS

Monkey Tails are made out of the same thin, soft, durable felt as the Monkey Strips only they are not pre-cut. Monkey Tails are one long roll which allows installers to make a custom buffer for any sized squeegee.



CODE: GDIMS4

GDI MONKEY STRIPS

These pre-cut buffers fit any standard 4" squeegee. They are far superior to standard felt strips and will help prevent scratches to the wrap material during installation. Give your hard plastic squeegees a soft and smooth side with the Monkey Strip.



CODE: GDIGT062

6" PRO SQUEEGEE DELUXE

An installation squeegee as a ready-to-use assembly.

Used to remove application solution from beneath the film during the installation of all flat glass film types.



CODE: GDIGT204

SUP CLR POWER MAX/HANDLE

Ready-to-use installation squeegee uses angled Clear Max and specially modified and Unger Pro handle for GDI.



cohesive

Applicators - Specialised



CODE: GDIGT1046

FUSION GRIP - 8"

The 8" Fusion Big Mouth Handle features brass inlaid screw threads and stainless steel screws. This handle is designed to hold a 3/8" thick squeegee.

One of the biggest issues installers encounter when installing thick mil films is extended dry time. This is mainly due to not being able to extract a majority of the solution because their current tools flex too much or they don't have enough strength to push as hard as they need to. The Big Mouth handles and 3/8" Blades are the solution to that problem by taking more of the force required to adequately finish the job off of the installer.



CODE: GDIGT1046 & GDIGT117-8

FUSION GRIP - 8" & 8" BLUE MAX SQUEEGEE

Interchange the Fusion Grip 8" handle with our two Blue Max Squeegees.



CODE: GDIGT122

BLUE POWER MAX W/ HANDLE

Ready-to-use installation squeegee uses angled Blue Max and specially modified Unger Pro handle for GDI.



CODE: GDIGT107A

6" TR. SCRAP W/ANGLED HEAD

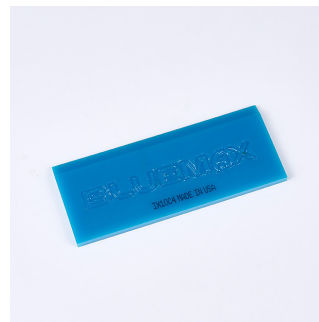
Improved version of the original 6" scraper. Lightweight and maneuverable. Handle is tilted at a 30 degree angle. Includes cover and one double-edged blade.



CODE: GDIGT117-8

8" BLUE MAX SQUEEGEE

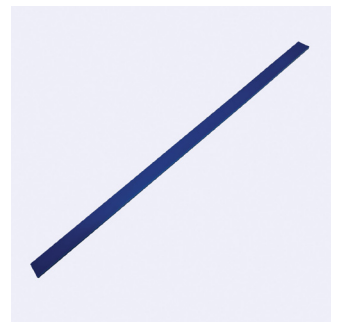
Installation squeegee for flat glass applications. Use this blade in the 8" Fusion Handle.



CODE: GDIGT117

5" BLUE MAX SQUEEGEE

Installation squeegee for automotive and flat glass applications. Harder than GT203, these tools are excellent for water evacuation.



CODE: GDIGT118-18

GDI 18" BLUE SQUEEGEE CHANNEL REFILL

Applicators - Specialised



CODE: GDIGT044BLU

BLUE LITTLE FOOT SQUEEGEE

This squeegee measures about 6" (15 cm) along the usable edge. The pointed edge of this tool allows the installer to squeegee in very tight areas. The Little Foot has plenty of room to keep a good grip on the squeegee.



CODE: GDIGT202B

THE CONQUERER-BLUE

Same as the original Conquerer with a slightly harder durometer for more squeegeeing power.



CODE: GDIGT202

THE CONQUERER

The Conquerer is the original corner reach tool. Features a soft squeegee blade along one edge and point hard card tips on the ends making it a versatile staple to any tool kit.



CODE: GT1010

PAINT PROTECTION SQUEEGEE

Soft rubber card style squeegee. Recommended for paint protection installations.



CODE: GDIGT044BLK

BLACK LITTLE FOOT SQUEEGEE

This squeegee measures about 6" (15 cm) along the usable edge. The pointed edge of this tool allows the installer to squeegee in very tight areas. The Little Foot has plenty of room to keep a good grip on the squeegee.



CODE: GDIGT044

RED LITTLE FOOT SQUEEGEE

This squeegee measures about 6" (15 cm) along the usable edge. The pointed edge of this tool allows the installer to squeegee in very tight areas. The Little Foot has plenty of room to keep a good grip on the squeegee.



CODE: GDIGT2003-PLT

ORIGINAL EZ REACH PLATINUM

The durometer (hardness) is more than the gold and is just as popular!



CODE: GDIGT2003

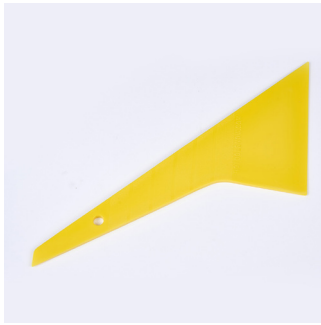
ORIGINAL EZ REACH GOLD

The durometer (hardness) is less than the platinum and is just as popular!



cohesive

Applicators - Specialised / Knives & Blades



CODE: GDIGT151

QUICK FOOT - YELLOW

A stiff squeegee with a handle for jobs that require medium reach.



CODE: GDIGT151B

QUICK FOOT - BLUE

A stiff squeegee with a handle for jobs that require medium reach.



CODE: GDIGT151W

QUICK FOOT - WHITE

A stiff squeegee with a handle for jobs that require medium reach.



CODE: GDIGT206

WHALE TAIL SQUEEGEE

Great for getting behind brake lights and back window applications.



CODE:

AUTO TINT TOOL

The Bulldozer I is used in automotive applications. It allows you to get to those hard to reach areas, such as behind speakers, brake lights, low angles and rear windows. Features a 6" squeegee blade and is 15" in overall length.



CODE: GDIGT226

OLFA"SLV.2" AUTOLOCK KNIFE

An improved and versatile knife that features right or left-handed use, blade position auto-lock, and one-segment click action.



CODE: GDIGT026N

A-553P INJECTOR CART. KNIFE (W/30 DEGREE BLADE)

Used for film pattern cutting and trimming. Comes with 30 degree blades installed but will accommodate regular 9 mm blades. Holds five blades for automatic blade replacement capabilities.



CODE: BFPLHC

BUBBLE-FREE PRO LONG HANDLED CUTTER 60CM

Bubble-Free Pro long handled cutters make trimming wide graphics easy. The long handle allows you to reach right across your table with one stroke, reducing time when trimming.

Knives & Blades



CODE: KSOS

**ORANGE SNAP-OFF
KNIFE**

Small - 9mm



CODE: KSOL

**ORANGE SNAP-OFF
KNIFE**

Large - 18mm



CODE: KNA300METAL

NT CUTTER A-300GRP

9mm Snapoff Knife
- Grey Metal



CODE: KNA300P

NT CUTTER A-300P

9mm Snapoff knife
- Cream

Includes 3 blades



CODE: KNL500G

**NT CUTTER L-500G
SCREWSTOPPER**

18mm knife



CODE: KNL500GR

**NT CUTTER L-500GRP
AUTOLOCK**

18mm knife



CODE: KNSZAL

**STERLING ZEBRA
AUTOLOCK METAL KNIFE**

18mm knife



CODE: KOSS

**ORAFOL SMALL
SNAP-OFF KNIFE - BLK**



CODE: KDH601CS

**DAFA 601CS - HOBBY
KNIFE - SILVER (INC. 5x
BLADES + CAP)**



CODE: KDH600S

**DAFA 600S - HOBBY
KNIFE - BLACK (INCL. 5x
BLADES + CAP)**



CODE: KDB1150

**DIPLOMAT HOBBY
BLADES #11**

50 Pack



CODE: SNITTYCO

COHESIVE SNITTY CUTTER

With finger grip and enclosed
blade it is perfect for cutting vinyls.



cohesive

Knives & Blades



CODE: KND50

NT CUTTER BD-50

50 pack

9mm 30deg Snapoff
Blades



CODE: KND100

NT CUTTER BD-100

5 pack

9mm 30deg Snapoff
Blades



CODE: KNA50

NT CUTTER BA-50

50 pack

9mm, 58 degree Snapoff Blade
- use with small orange knife



CODE: KNA10P

NT CUTTER BA-10

10 pack

9mm, 58 degree Snapoff
Blade



CODE: KNL10P

NT CUTTER BL-1P 18MM
SNAPOFF BLADES

10 pack



CODE: KNL50

NT CUTTER BL-50 PACK

18mm Snapoff Blades
- use with Large orange knife



CODE: KUTBL

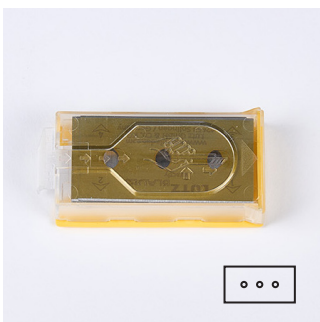
AMPRO UTILITY BLADES

5 pack



CODE: KSHPH

HAYDN SCRAPER
HANDLE GREEN/RED
PLASTIC



CODE: KNBSNITTY

SNITTY CUTTER KNIFE
BLADES

10 pack



CODE: APBVCRB

SOTT BACKING PAPER
CUTTER REPLACEMENT
BLADE

10 pack



CODE: KSWC

AMPRO RETRACTABLE
SAFETY SCRAPER

Includes 5 blades



CODE: KRB10

AMPRO RAZOR BLADES
SINGLE EDGE

10 pack



Knives & Blades



CODE: KSSR5

SCRAPERITE PLASTIC SCRAPER

Li'l Gripper Holder & 5 blades



CODE: KSSRB100

SCRAPERITE PLASTIC SCRAPER BLADES ORANGE - Flexible

100 pack



CODE: KBR1/12

RAZOR BLADES

No.12 Single Edge
100 pack



CODE: KUTBL

WORLDWIDE HEAVY DUTY SCRAPER BLADES 4"

5pk - Fits Worldwide 902 Scraper Handle



CODE: KSB250

WORLDWIDE 902 SCRAPER HANDLE 100MM



CODE: OSBDC2

STERLING BLADEMATE - SAFETY BLADE DISPOSAL CASE - BLACK



CODE: KSMH

SWAN MORTON SCALPEL HANDLE

Swan Morton Nickel Steel Alloy Handle #3



CODE: KSMBL

SWAN MORTON BLADES #10

#10 Swan Morton blades for the Swan Morton handle. 5 pack.



CODE: KSMBL10A

SWAN MORTON BLADES #10A

#10A Swan Morton blades for the Swan Morton handle. 5 pack.



CODE: KSMBL11

SWAN MORTON BLADES #11

#11 Swan Morton blades for the Swan Morton handle. 5 pack.



cohesive

Sign Mounts



CODE: DTMLS15610

**FUSION MOUNT LIGHT
SILVER 15 X 7 X 10**

Supplied in a 4 Pack.
Interior use. Post 7mm \varnothing



CODE: DTMLS15618

**FUSION MOUNT LIGHT
SILVER 15 X 7 X 18**

Supplied in a 4 Pack.
Interior use.



CODE: DTMLS15640

**FUSION MOUNT LIGHT
SILVER 15 X 6 X 40**

Supplied in a 4 Pack.
Interior use.



CODE: DTMLS15910TT

**FUSION MOUNT LIGHT
SILVER 15 X 10 X 10
TURRET TOP**

Supplied in a 4 Pack.
Interior use.



CODE: DTMLS251025

**FUSION MOUNT LIGHT
SILVER 25 X 10 X 25**

Supplied in a 4 Pack.
Interior use.



CODE: DTMLS301010

**FUSION MOUNT LIGHT
SILVER 30 X 10 X 10**

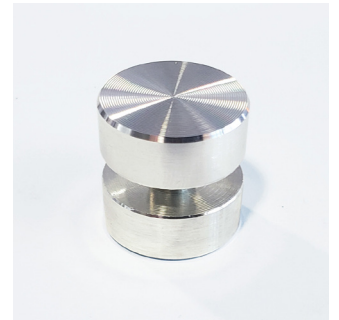
Supplied in a 4 Pack.
Interior use.



CODE: DTMLS20910

**FUSION MOUNT LIGHT
SILVER 19 X 7 X 10**

Supplied in a 4 Pack.
Interior use.

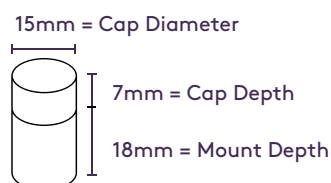


CODE: DTMLS251010

**FUSION MOUNT LIGHT
SILVER 25 X 8 X 10**

Supplied in a 4 Pack.
Interior use.

SIZING GUIDE
eg: 15 X 7 X 18



Accessories



CODE: VXTENG

**TWEezer ENGINEER
125MM STRAIGHT PT-01**



CODE: VXTECO

**TWEezer ECONOMY
POINTED PTS-01**



CODE: STOOLSET

SISER ACC - TOOL SET - WEEDEr AND TWEezer SET

The sharp tips allow you to pierce the vinyl for easy removal. Made from surgical steel with a anti-static rubber coated grip. (Includes 1 x Weeder, 1 x Tweezer)



CODE: POMWH

**PENCIL - STAEDTLER
OMNICHROME - WHITE
108-0. NON-PERMANENT**

Cleans off with water.



CODE: POMBK

**PENCIL - STAEDTLER
OMNICHROME - BLACK
108-9. NON-PERMANENT**

Cleans off with water.



CODE: POMBL

**PENCIL - STAEDTLER
OMNICHROME - BLUE
108-3. NON-PERMANENT**

Cleans off with water.



CODE: PCGBK/PCGWH

**PENCIL - STAEDTLER
CHINOGRAPH - BLACK
& WHITE.**

Permanent.



CODE: VXR2

RUBBER ROLLER - 2"



CODE: VXR3

RUBBER ROLLER - 3"



CODE: VXR4

RUBBER ROLLER - 4"



CODE: VXR6

RUBBER ROLLER - 6"



cohesive

Accessories / Cleaning



CODE: MEMOMAG12

PAWN MAGNETS 12 PACK



CODE: ASPOU21

AS HANDOVER POUNCE
WHEEL 2.1 DIAMETER



CODE: ASPOUSET

GRIFFOLD POUNCE
WHEEL SET (9,10,12)



CODE: BTW

BLASTER TRACTOR
WHEEL VINYL REMOVER



CODE: FS180S

FOAM SLEEVE SPECIAL
(HAYDN) 5MM - 180MM

Fits standard roller handle.



CODE: ORAPPGEL1L

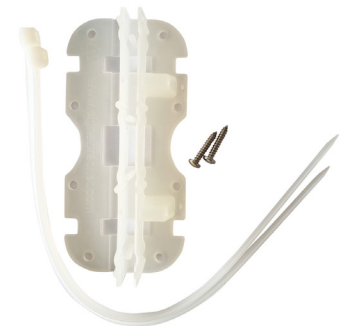
ORACAL APPLICATION
GEL 1000ML



CODE: SASSAB

FUSION SECURE-A-SIGN BRACKET FOR
COREFLUTE

Secure flute board signs to any surface.



CODE: BFPLR

BUBBLE-FREE PRO
LINT ROLLER

Bubble-Free Pro Lint Roller keeps
your digital prints free from dust
to ensure dust free lamination.
Easy clean.

Cleaning



CODE: PTIPA4

ISO PROPYL ALCOHOL
(IPA) 4L



CODE: PTIPA1

ISO PROPYL ALCOHOL
(IPA) 1L



CODE: PTDG4

WAX AND GREASE
DEGREASER 4L



CODE: PTDG1

WAX AND GREASE
DEGREASER 1L



CODE: ROST-037A

ROLAND PARTS -
CLEANING STICKS FOR ALL INKJETS

Available in a 10 pack or 100 pack



CODE: VXSR5

SPRAY BOTTLE
500ML SOLVENT
RESISTANT TRIGGER



CODE: VXSR1

SPRAY BOTTLE
1L SOLVENT RESISTANT
TRIGGER



CODE: DIGIWIPE

DIGITAL CLEANING
WIPES

200 PACK

36CM X 45CM



CODE: CLEANKITG

CLEANING AND CARE
KIT FOR GLOSSY CAR
WRAPPING FILMS



cohesive

Rulers

KEENCUT



KEENCUT SAFETY STRAIGHT EDGE RULER

Designed for your safety - You can rely on Keencut's industry-leading reputation for safety and quality, even when buying the simplest tool.

Our lightweight Safety Straight Edge is precision engineered for use in marking, drawing, pen-lining, scoring or cutting. Available in a range of sizes.



Protecting you
Protecting your work



Designed for your safety



5 Year Guarantee

CODE: KCSSE45

KEENCUT SAFETY STRAIGHT EDGE 45CM RULER

CODE: KCSSE60

KEENCUT SAFETY STRAIGHT EDGE 60CM RULER

CODE: KCSSE75

KEENCUT SAFETY STRAIGHT EDGE 75CM RULER

CODE: KCSSE105

KEENCUT SAFETY STRAIGHT EDGE 105CM RULER

CODE: KCSSE120

KEENCUT SAFETY STRAIGHT EDGE 120CM RULER

CODE: KCSSE135

KEENCUT SAFETY STRAIGHT EDGE 135CM RULER

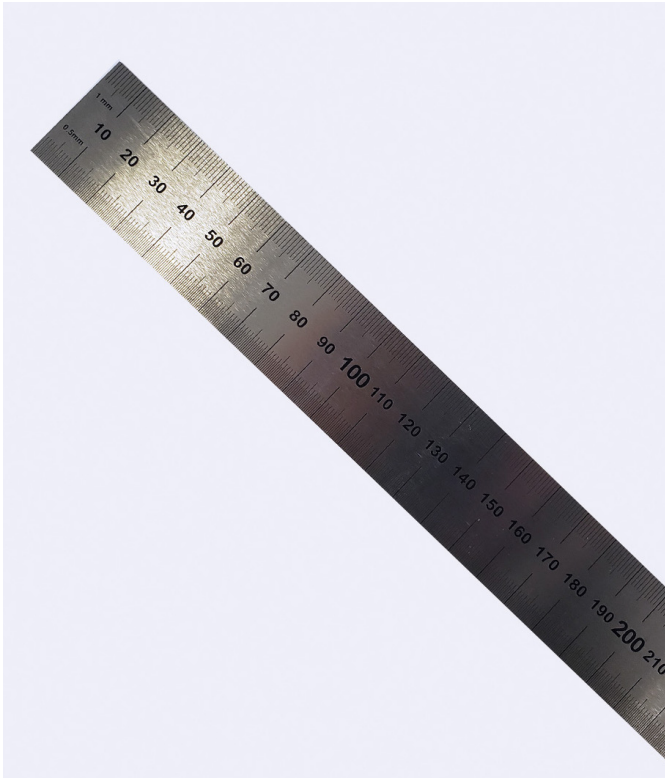
CODE: KCSSE150

KEENCUT SAFETY STRAIGHT EDGE 150CM RULER

CODE: KCSSE180

KEENCUT SAFETY STRAIGHT EDGE 180CM RULER

Rulers



WORLDWIDE STAINLESS STEEL RULER

CODE: RS150

WORLDWIDE STAINLESS STEEL RULER - 150MM

CODE: RS300

WORLDWIDE STAINLESS STEEL RULER - 300MM

CODE: RS450

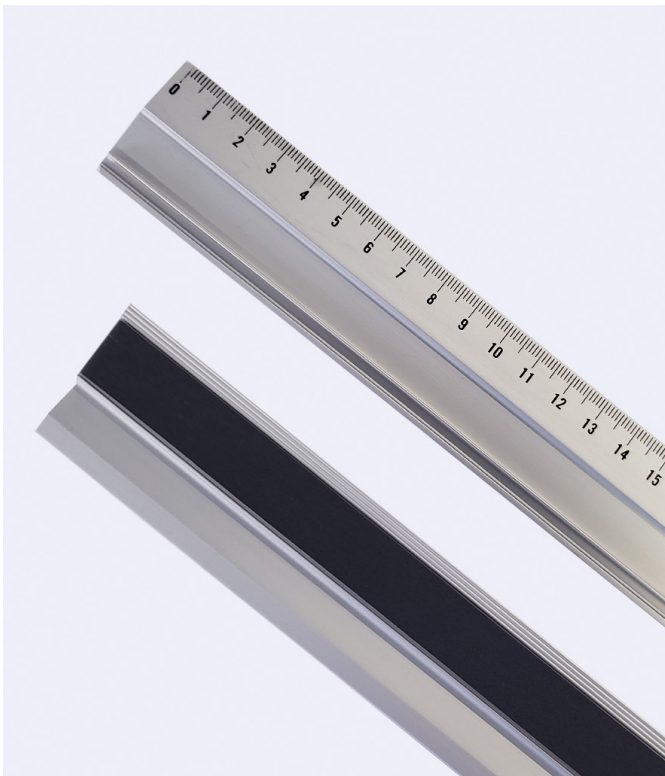
WORLDWIDE STAINLESS STEEL RULER - 450MM

CODE: RS600

WORLDWIDE STAINLESS STEEL RULER - 600MM

CODE: RS1000

WORLDWIDE STAINLESS STEEL RULER - 1000M



WORLDWIDE ALUMINIUM NON-SLIP RULER

CODE: RA600

WORLDWIDE ALUMINIUM NON-SLIP RULER - 600MM

CODE: RS100

WORLDWIDE ALUMINIUM NON-SLIP RULER - 1000MM



Gloves



CODE: WGWGGOHST

WASTEGATE GHOST WRAPGLOVE

- Lint Free / Static Resistant
- Prevents oil transfer from hands to adhesive side of film
- No fingerprint transfer to adhesive, inherent to bare hand application of PPF
- No hot spots from hand when working kits or large panels
- Quicker movement of fluid using the gloved hand upon setting panel just before squeegee use = Less squeegee time = Higher production
- Decreased fluid puddling using the gloved hand
- The GHOST™ feature is extremely slick so defining edges with hand is immediate, with NO drag
- Cut Resistance is A2 - extremely cut resistant



CODE: WSGGGOHST2P

WASTEGATE GHOST SQUEEGEEGLOVE 2 PACK ONE SIZE

- A High performance tool for your squeegee
- The GHOST shines when applying films in high temp conditions and direct sunlight
- Effortlessly glides over rivete pre-mask/ transfer paper applied graphics
- Less effort on commercial applications = less energy to expend during application
- The GHOST feature offer is extremely slick, so defining edges is immediate with NO Drag

Gloves



CODE: WGWGV3

WASTEGATE WRAPGLOVE V3

WrapGlove® by Wastegate is specifically constructed to optimize any applicators efforts. Prevents oil transfer to surfaces, Reduced scratches, Anti static properties that reduce the attraction of airborne dust, Machine washable.

Built durable to be used over and over again

CODE: WGWGV32PS

WASTEGATE WRAPGLOVE V3 2 PACK SMALL

CODE: WGWGV32PM

WASTEGATE WRAPGLOVE V3 2 PACK MEDIUM

CODE: WGWGV32PL

WASTEGATE WRAPGLOVE V3 2 PACK LARGE

CODE: WGWGV32PXL

WASTEGATE WRAPGLOVE V3 2 PACK X-LARGE



CODE: APGLOVESM

APPLICATION GLOVES
2-PIECES - MEDIUM SIZE

CODE: APGLOVESXL

APPLICATION GLOVES
2-PIECES - X LARGE SIZE

CODE: APGLOVESL

APPLICATION GLOVES
2-PIECES - LARGE SIZE



CODE: DIGCOTGL

DIGITAL COTTON GLOVE UNISIZE PAIR

Digital cotton and application gloves.



cohesive

Brushes - 2101 Sable Mix Chisel Writer



CODE: B2101/1
SERIES 2101 SABLE MIX
CHISEL WRITER
1
Acrylic Paint



CODE: B2101/2
SERIES 2101 SABLE MIX
CHISEL WRITER
2
Acrylic Paint



CODE: B2101/3
SERIES 2101 SABLE MIX
CHISEL WRITER
3
Acrylic Paint



CODE: B2101/4
SERIES 2101 SABLE MIX
CHISEL WRITER
4
Acrylic Paint



CODE: B2101/5
SERIES 2101 SABLE MIX
CHISEL WRITER
5
Acrylic Paint



CODE: B2101/6
SERIES 2101 SABLE MIX
CHISEL WRITER
6
Acrylic Paint



CODE: B2101/7
SERIES 2101 SABLE MIX
CHISEL WRITER
7
Acrylic Paint



CODE: B2101/8
SERIES 2101 SABLE MIX
CHISEL WRITER
8
Acrylic Paint



CODE: B2101/9
SERIES 2101 SABLE MIX
CHISEL WRITER
9
Acrylic Paint



CODE: B2101/10
SERIES 2101 SABLE MIX
CHISEL WRITER
10
Acrylic Paint



CODE: B2101/12
SERIES 2101 SABLE MIX
CHISEL WRITER
12
Acrylic Paint



Brushes - 2112 Pure Sable Chisel Writer



CODE: B2112/00

SERIES 2112 PURE SABLE
CHISEL WRITER

00

Enamel Paint



CODE: B2112/0

SERIES 2112 PURE SABLE
CHISEL WRITER

0

Enamel Paint



CODE: B2112/1

SERIES 2112 PURE SABLE
CHISEL WRITER

1

Enamel Paint



CODE: B2112/2

SERIES 2112 PURE SABLE
CHISEL WRITER

2

Enamel Paint



CODE: B2112/3

SERIES 2112 PURE SABLE
CHISEL WRITER

3

Enamel Paint



CODE: B2112/4

SERIES 2112 PURE SABLE
CHISEL WRITER

4

Enamel Paint



CODE: B2112/5

SERIES 2112 PURE SABLE
CHISEL WRITER

5

Enamel Paint



CODE: B2112/6

SERIES 2112 PURE SABLE
CHISEL WRITER

6

Enamel Paint



CODE: B2112/7

SERIES 2112 PURE SABLE
CHISEL WRITER

7

Enamel Paint



CODE: B2112/8

SERIES 2112 PURE SABLE
CHISEL WRITER

8

Enamel Paint



CODE: B2112/9

SERIES 2112 PURE SABLE
CHISEL WRITER

9

Enamel Paint



CODE: B2112/10

SERIES 2112 PURE SABLE
CHISEL WRITER

#10

Enamel Paint



cohesive

Brushes - 2112 Pure Sable Chisel Writer



CODE: B2112/12

SERIES 2112 PURE SABLE
CHISEL WRITER

12

Enamel Paint



CODE: B2112/14

SERIES 2101 SABLE MIX
CHISEL WRITER

14

Enamel Paint

Brushes - 2106 Brown Ox Truck Lettering



CODE: B2106/1"

SERIES 2106 BROWN OX
TRUCK LETTERING

1"



CODE: B2106/1/2"

SERIES 2106 BROWN OX
TRUCK LETTERING

1/2"



CODE: B2106/3/4"

SERIES 2106 BROWN OX
TRUCK LETTERING

3/4"



CODE: B21063/8"

SERIES 2106 BROWN OX
TRUCK LETTERING

3/8"



CODE: B21065/8"

SERIES 2106 BROWN OX
TRUCK LETTERING

5/8"



CODE: MAHLW2

MAHL STICK
A.S. HANDOVER WOODEN MAHL STICK 2PC

As per picture.

Tape - General Purpose



CODE: TM8B24

NO.8 GENERAL PURPOSE
MASKING TAPE

12MM X 50 MTRS

CODE: TM8B18

NO.8 GENERAL PURPOSE
MASKING TAPE

18MM X 50 MTRS

CODE: TM8B24

NO.8 GENERAL PURPOSE
MASKING TAPE

24MM X 50 MTRS



CODE: TMSP12

NO.7 GENERAL PURPOSE
ONE-DAY MASKING TAPE

12MM X 50M

CODE: TMSP18

NO.7 GENERAL PURPOSE
ONE-DAY MASKING TAPE

18MM X 50M

CODE: TMSP24

NO.7 GENERAL PURPOSE
ONE-DAY MASKING TAPE

24MM X 50M

CODE: TMSPZB48

NO. 7B GENERAL PURPOSE
ONE-DAY MASKING (SPECIAL)

48MM X 50M



CODE: TM11B004 / TM11B096

NO.11 SOFT PVC MASKING TAPE

48MM X 55M

96MM X 55M



CODE: TMSPZB48

NO. 7B MASKING SPECIAL

48MM X 50M



CODE: TMPHT24

NO. 12 MASKING PREMIUM
HI TACK

24MM X 50M



cohesive

Tape - General Purpose



CODE: TLPVC12

TAPE - LINING PVC
12MM X 66M

CODE: TLPVC6

TAPE - LINING PVC
6MM X 66M

*Colours may vary



CODE: TSUO3

TAPE - UNIVERSAL
STRIPING 3MM/90M

CODE: TSUO3

TAPE - UNIVERSAL
STRIPING 6MM/45M

CODE: TSUO12

TAPE - UNIVERSAL
STRIPING 12MM/45M

CODE: TSUO25

TAPE - UNIVERSAL
STRIPING 25MM/45M

*Colours available upon
request



CODE: HPHRT5MM

HEAT PRESS - HEAT
RESISTANT TAPE -5MM

Used to hold transfers
in place whilst heat
pressing.



CODE: GDIGT2021-4

TEFLON TAPE 3/4" X 4 YD

Slip Tape is the ultimate
product for making your
application squeegees
smoothly and safely
glide across window film,
paint protection, and car
wrap and vinyl graphic
applications. No more
tearing or scratching the
material you are working
with.



CODE: TSWC360

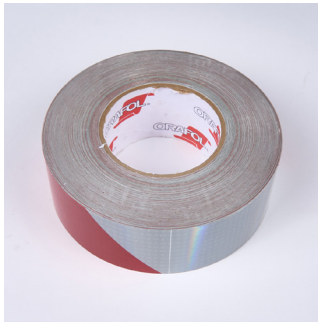
WRAPCUT FINE FILAMENT EDGE CUTTING TAPE
3MM X 60.9M

WrapCut Fine Filament Edge Cutting Tape can
be used to make precise trim lines through many
printed vinyl and protective film products as well
as paint and epoxy coatings.

With the fine cutting filament always at the very
edge of the tape, WrapCut prevents errors in
cutting location, producing a perfect cut every time.

Tape - Reflective

ORALITE®

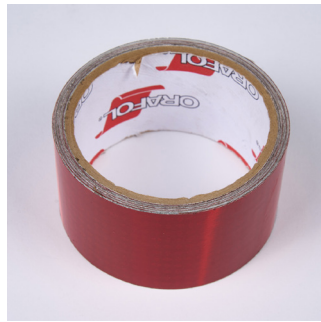


CODE: MRV82RW45LH

**ORALITE V82
CONSPICUITY TAPE
LH & RH - RED/WHITE**

50mm (sold per metre)

Other widths available on special order.



CODE: RVC104R50

**ORALITE VC104+
CONSPICUITY TAPE
- RED**

50mm (sold per metre)



CODE: RVC104Y50

**ORALITE VC104+
CONSPICUITY TAPE
- YELLOW**

50mm (sold per metre)

Reflective Conspicuity Tape is designed to assist motorists to detect the whereabouts of large vehicles on our roads.

The product also assists in distinguishing the size and dimensions of HGV vehicles and trailers at night or poor weather conditions.

Tape - Transfer Tape

ORABOND®



CODE: OT1375...

**ORABOND 1375 ACRYLIC
TRANSFER TAPE 60MIC**

**SIZES: 25MM, 50MM X 305MM,
610MM X 50M**

ORABOND 1375 Acrylic Transfer Tape, ideally suited for metal and plastic name plates and fascia panels. It is suitable for adhesion to smooth or lightly porous surfaces. Excellent peel and shear strength, extreme resistance to UV light, solvents and plasticiser and 160 degree long term temperature resistance.

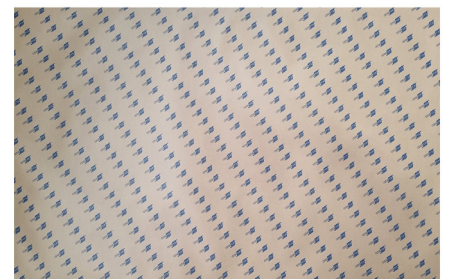


CODE: OT1377..

**ORABOND 1377 ACRYLIC
TRANSFER TAPE 125MIC**

**SIZES: 25MM, 50MM X 305MM,
610MM X 50M**

ORABOND 1377 Acrylic Transfer Tape, ideally suited for metal and plastic name plates and fascia panels as well as adhesion to rough, structured or stamped surfaces. It is recommended to apply this tape at the smallest angle possible. Excellent peel and shear strength, extreme resistance to UV light, solvents and plasticiser and 160 degree long term temperature resistance.



CODE: OT1375S

**ORABOND 1375S ACRYLIC
TRANSFER TAPE 100 SHEETS
60MIC 610MM X 914MM**

This tape is ideal for use in industrial and commercial applications, for signs, decorations, front plates and displays that require an extremely high shear strength, adhesion strength and temperature resistance. It is suitable for adhesion to smooth or lightly porous surfaces.



cohesive



ORABOND®

UHB® Tape

Product	UHB03100T	UHB03110W	UHB03110G
Colour	Transparent	White	Grey
Thickness	1.0mm	1.1mm	1.1mm
Widths	12mm/19mm/25mm	12mm/19mm/25mm	12mm/19mm/25mm
Key Properties	High-strength bonding of transparent material needing an "invisible" joint	High performance bonding and mounting of light coloured surfaces	High performance bonding and mounting of dark coloured surfaces
Roll length	33mtrs	33mtrs	33mtrs
Shear strength	0,50 N/mm ² , (50 N/cm ²) After 24 hrs (based on ASTM D1002, stainless steel)	0,62 N/mm ² , (62 N/cm ²) After 24 hrs (based on ASTM D1002, stainless steel)	0,62 N/mm ² , (62 N/cm ²)



CODE: OT1397PP...

ORABOND 1397PP 210MIC DOUBLESIDED CLEAR TAPE

SIZES: 12MM, 19MM, 25MM, 50MM, 500MM X 50M

High Performance Double Coated Tape with red polypropylene liner - Ideal for use with POP displays, outdoor signage, banners, fluted PP board etc. Very good resistance against UV light, solvent and plasticisers and has a 160 degree long term temperature.



CODE: OT1811...

ORAMOUNT 1811 - 1140MIC DOUBLESIDED FOAM TAPE

SIZES: 19MM, 25MM X 25M

For the installation of spray-cast and extruded plastic parts with smooth surfaces such as panels, bars and signs, as well as plexiglass mirrors for interior fit-outs and displays. Due to its good UV, water and ageing resistance, this product is also suitable for external applications. Modified solvent acrylate adhesive.

NEW

fusion

RUBBER BASE & BLADE COMBO

Made from heavy duty durable recycled rubber, our new Fusion footpath signs are portable and easy to carry with an integrated carry handle. Ideal for high wind areas where you need your sign to stay put!

**BUY MORE
SAVE
MORE!**

- **Black Base**
- **Stackable for easy storage**
- **Weight - 11 kg**
- **ACM Blade**

Login to view products and pricing



cohesive

Footpath Signs



CODE: CSFRBPC

COMBO FOOTPATH SIGN

- RUBBER BASE + ALUMINIUM COMPOSITE PANEL
- PANEL 800MM X 600MM WHITE (WITH HANDLE)



CODE: SB2BBLK & SB2PWH

FUSION B2 FOOTPATH SIGN

- 600MM BASE ONLY - BLACK & FUSION B2 ALUMINIUM COMPOSITE PANEL
- PANEL 800MM X 600MM WHITE(NO HANDLE)



CODE: SRUBBER

FUSION FOOTPATH SIGN

RUBBER BASE ONLY

Heavy rubber base for high wind areas.



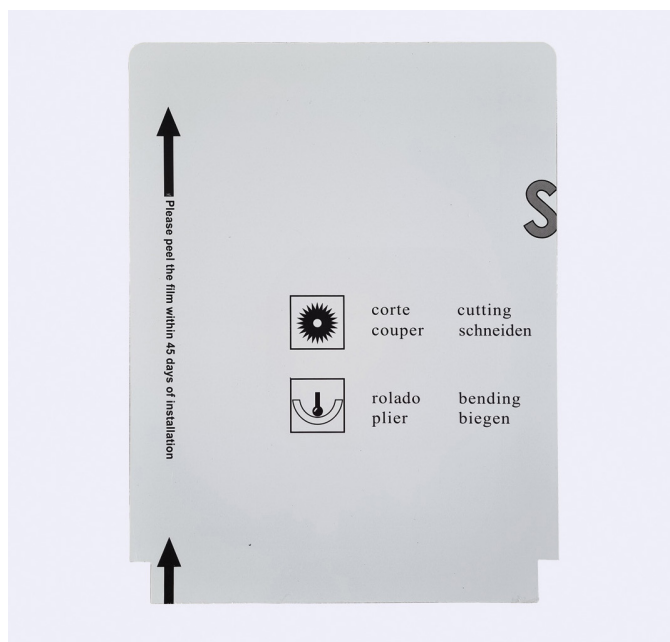
CODE: SB2BBLK

FUSION B2 FOOTPATH SIGN - 600MM

PLASTIC BASE ONLY - BLACK

Plastic water fillable.

Footpath Signs



CODE: SB2PWH

FUSION B2 ALUMINIUM COMPOSITE PANEL
800MM X 600MM

WHITE (NO HANDLE)



CODE: SB2PWH

FUSION B2 ALUMINIUM COMPOSITE PANEL
800MM X 600MM

WHITE (WITH HANDLE)



CODE: SB2PBLKNH

FUSION B2 ALUMINIUM COMPOSITE PANEL
800MM X 600MM

BLACK (NO HANDLE)



CODE: SB2PBLK

FUSION B2 ALUMINIUM COMPOSITE PANEL
800MM X 600MM

BLACK (WITH HANDLE)



Footpath Signs/Promotional



CODE: SACS9

FUSION A-FRAME WITH COLOURSTEEL PANEL
900MM X 600MM

Steel panels attached.



CODE: SACF9

FUSION A-FRAME (TO SUIT COREFLUTE INSERT)
900MM X 600MM

5mm Coreflute to be inserted in both sides.
Coreflute not included.



CODE: SGS4CF

FUSION SIGN METAL GRASS SPIKE FOR COREFLUTE



CODE: SSMFR

FUSION PLASTIC COLOURED COREFLUTE SIGN
HOLDER (SELMAX)

Pull Up Banners



CODE: SSSRU850P

**FUSION ECONOMY SINGLE SIDED ROLLUP BANNER STAND
850MM X 2000MM**

Supplied in a black carry case.



AUCKLAND

Unit 2, 99 Carbine Road,
Mt Wellington,
Auckland 1060

cohesivenz.co.nz

p. 09 525 6370 / 0800 113 631
auckland@cohesivenz.co.nz

CHRISTCHURCH

10b Moncur Pl,
Addington,
Christchurch 8024

cohesivenz.co.nz

p. 03 379 3795 / 0800 113 631
christchurch@cohesivenz.co.nz



cohesive

cohesive